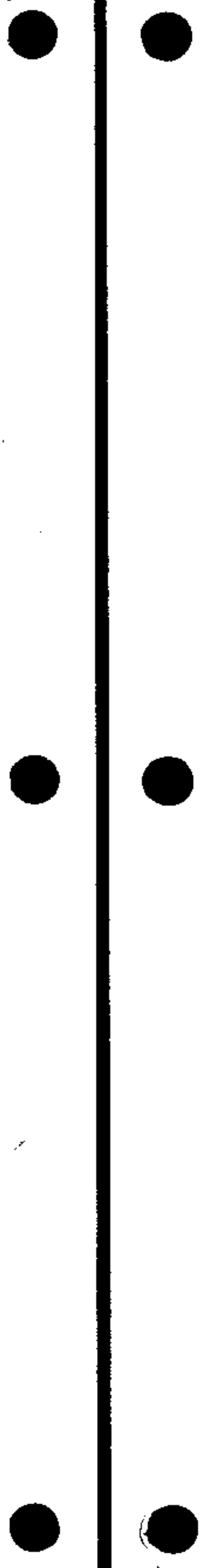
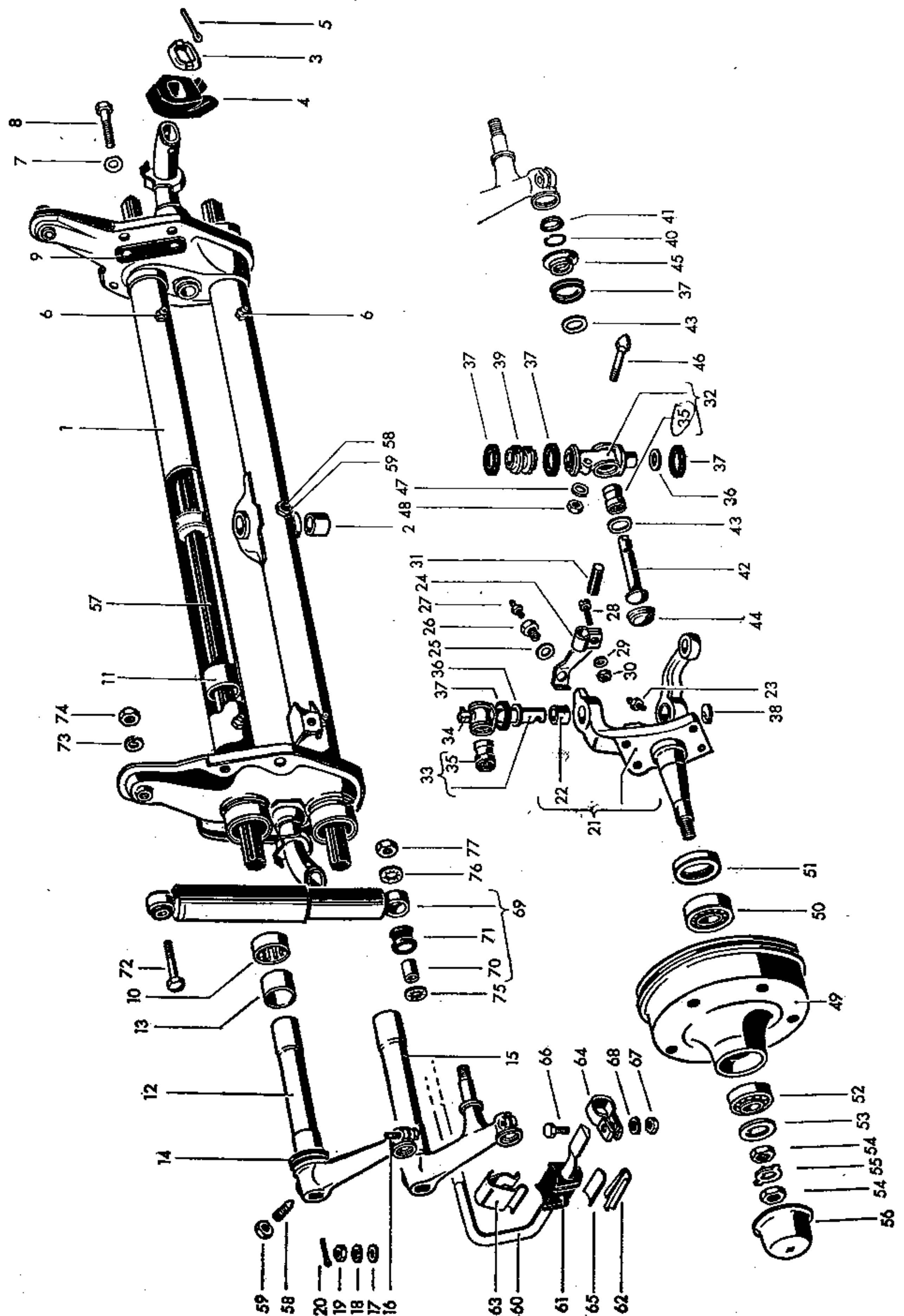


---

FRONT AXLE  
STEERING

	Illustration
01 Front axle	28
05 Front suspension	28
11 Torsion springs	28
13 Shock absorber, front	28
15 Steering	29
98 SP sets	—





Key No.	Part No.	Description	Quantity	Type and model
<b>FRONT AXLE</b>				
<b>FRONT AXLE BEAM</b>				
-	211 401 021	Front axle beam (LHD) ..... up to Chassis No. 20 - 117 901	1	211-215, 231-237, 261-263
-	214 401 021	Front axle beam (RHD) ..... up to Chassis No. 20 - 117 901	1	214, 216, 234, 238, 264
-	221 401 021	Front axle beam (LHD) ..... up to Chassis No. 20 - 117 901	1	221-225, 241, 271-273
1	211 401 061 D	Front axle beam (without needle bearings) ..... from Chassis No. 1 144 282 up to 215 036 650 from Chassis No. 215 036 651	1 1 1	M 215 271-274
-	211 401 061 F	Front axle beam ..... from Chassis No. 20 - 117 902 up to 215 036 650 from Chassis No. 20 - 117 902 up to 1 144 281 up to Chassis No. 1 144 281 the following parts are additionally required: 212 401 271 Ring - Stop 211 401 273 A Stop (rubber) N 12 545 1 Cotter pin 5x45 DIN 94	1 1	211-264 271-274
-	211 401 139 A	Reinforcement for front axle anchor plate .....	2	
2	211 401 185	Bush - Swing lever shaft .....	2	
3	211 401 271	Ring - Stop from Chassis No. 1 144 282 .....	2	
-	111 401 273	Stop (rubber) up to Chassis No. 1 144 281 .....	2	
4	211 401 273 A	Stop (rubber) from Chassis No. 1 144 282 .....	2	
5	N 12 545 1	Cotter pin 5x45 .....	2	
-	N 18 530 1	Grease nipple A 10 .....	5	
6	N 18 516 1	Grease nipple A 8 .....	5	

Key No.	Part No.	Description	Quantity	Type and model
-	N 18 515 1	Grease nipple A 6 .....	1	
-	211 401 281	Lock plate - Front axle mounting up to Chassis No. 20 - 117 901	2	
-	N 10 200 2	Bolt, hex. head M 14×1.5×100 .....	4	
7	211 499 131	Lock plate .....	8	
		from Chassis No. 20 - 117 902		
8	211 499 121 A	Bolt - Front axle mounting .....	8	
		from Chassis No. 20 - 117 902		
-	N 12 011 2	Lock washer A 12 .....	8	
9	211 401 291	Shim 0.5 mm between front axle and frame .....	x	
10	211 401 301 A	Needle bearing - Torsion arm .....	4	M 215
		from Chassis No. 1 144 282 up to 215 036 650	4	271-274
		from Chassis No. 215 036 651	4	
-	211 401 313	Bush, outer - Torsion arm .....	4	211-264
		from Chassis No. 1 144 282 up to 215 036 650		
11	211 401 315	Bush, inner - Torsion arm .....	8	
		up to Chassis No. 1 144 281	4	
		from Chassis No. 1 144 282		

Key No.	Part No.	Description	Quantity	Type and model
<b>FRONT SUSPENSION</b>				
12	211 405 103 A	Torsion arm, upper .....	2	
		from Chassis No. 1 144 282		
-	211 405 105	Torsion arm, upper .....	2	
		up to Chassis No. 20 - 117 901		
-	211 405 105 B	Torsion arm, upper .....	2	
		from Chassis No. 20 - 117 902 up to 1 144 281		
13	211 405 123	Inner race - Needle bearing on torsion arm .....	4	271-274, M 215
		from Chassis No. 1 144 282 up to 215 036 650 up to Chassis No. 215 036 651	4	
14	211 405 129	Dust excluder - Torsion arm .....	4	
-	211 405 151	Torsion arm, lower .....	2	
		up to Chassis No. 20 - 117 901		
-	211 405 151 A	Torsion arm, lower .....	2	
		from Chassis No. 20 - 117 902 up to 1 144 281		
15	211 405 153 A	Torsion arm, lower .....	2	
		from Chassis No. 1 144 282		
16	N 10 451 1	Bolt, hex. head M 10×50 S DIN 931 .....	3	
-	N 10 445 1	Bolt, hex. head M 10×45 DIN 931 .....	1	
17	N 11 655 2	Washer 11.5 galvanized .....	4	
18	N 12 010 2	Lock washer B 10 DIN 127 galvanized .....	4	
19	N 11 010 2	Nut, hex. M 10 DIN 934 galvanized .....	4	
20	N 12 522 1	Cotter pin 2×22 DIN 94 .....	4	
-	*11 405 175 A	Mounting bolt lower (oversize) - Shock absorber	x	
-	N 12 825 1	Dowel pin grooved 4×25 DIN 1473 .....	x	
-	211 405 301	Steering knuckle left .....	1	
		up to Chassis No. 20 - 117 901		

Key No.	Part No.	Description	Quantity	Type and model
-	211 405 301 A	Steering knuckle left ..... from Chassis No. 20 - 117 902 up to 999 304	1	
-	211 405 301 C	Steering knuckle left ..... from Chassis No. 999 305 up to 1 144 281	1	
21	211 405 301 D	Steering knuckle left ..... M 216 and from Chassis No. 1 144 282	1	
-	211 405 302	Steering knuckle right ..... up to Chassis No. 20 - 117 901	1	
-	211 405 302 A	Steering knuckle right ..... from Chassis No. 20 - 117 902 up to 999 304	1	
-	211 405 302 C	Steering knuckle right ..... from Chassis No. 999 305 up to 1 144 281	1	
-	211 405 302 D	Steering knuckle right ..... M 216 and from Chassis No. 1 144 282	1	
-	211 405 317	Bush - King pin up to Chassis No. 999 304	4	
22	211 405 317 B	Bush - King pin from Chassis No. 999 305	4	
-	211 405 317 A	Bush - King pin (oversize)	4	
-	N 18 530 1	Grease nipple A 10	2	
23	N 18 516 1	Grease nipple A 8	2	
24	211 405 331	Clamp - Brake hose, left	1	
-	211 405 332	Clamp - Brake hose, right	1	
25	N 12 230 2	Spring washer B 10 DIN 137 galvanized	2	
26	211 405 335 A	Distance piece	2	
27	N 18 515 1	Grease nipple	2	
28	N 10 715 2	Screw, cheese head AM 6x15 DIN 84 galvanized	2	
29	N 12 006 2	Lock washer B 6 DIN 127 galvanized	2	

Key No.	Part No.	Description	Quantity	Type and model
30	N 11 006 2	Nut, hex. M 6 DIN 934 galvanized	2	
31	211 405 339	Sleeve	2	
-	211 405 365 A	King pin, lower with needle bearing ..... up to Chassis No. 999 304 (for use with 211 405 367 A)	2	
-	211 405 365 B	King pin, lower with needle bearing ..... from Chassis No. 999 305 up to 1 144 281	2	
32	211 405 365 C	King pin, lower with needle bearing ..... from Chassis No. 1 144 282	2	
-	211 405 367 A	King pin, upper with needle bearing (stepped) ... up to Chassis No. 999 304	2	
-	211 405 367 B	King pin, upper with needle bearing (stepped) ... from Chassis No. 999 305 up to 1 144 281	2	
33	211 405 367 C	King pin, upper with needle bearing ..... from Chassis No. 1 144 282	2	
-	N 18 510 1	Grease nipple C 10	2	
34	N 18 511 2	Grease nipple C 8	2	
-	211 405 421 A	Needle bearing 20 mm dia. .... up to Chassis No. 1 144 281	4	
-	211 405 421	Needle bearing 20 mm dia. (0.5 mm oversize) ... up to Chassis No. 1 144 281	x	
35	211 405 421 B	Needle bearing 22 mm dia. .... from Chassis No. 1 144 282	4	
-	211 405 431	Thrust washer - King pin ..... up to Chassis No. 20 - 117 901	28	
-	211 405 431 A	Thrust washer - King pin ..... from Chassis No. 20 - 117 902 up to 999 304	4	
36	211 405 431 B	Thrust washer - King pin ..... from Chassis No. 999 305	4	
37	211 405 439	Packing - King pin (rubber)	12	
38	N 11 603 1	Expansion plug 30 DIN 470 - Steering knuckle ..	2	

Key No.	Part No.	Description	Quantity	Type and model
-	211 405 451	Steering damper ..... up to Chassis No. 20 - 117 901	2	
-	211 405 471	Distance piece 28.6 mm - Steering knuckle ..... up to Chassis No. 999 304	2	
39	211 405 471 A	Distance piece 28.6 mm - Steering knuckle ..... from Chassis No. 999 305	2	
-	211 405 473	Distance piece 28.4 mm - Steering knuckle ..... up to Chassis No. 999 304	2	
-	211 405 473 A	Distance piece 28.4 mm - Steering knuckle ..... from Chassis No. 999 305	2	
-	211 405 475	Distance piece 28.25 mm - Steering knuckle ..... up to Chassis No. 999 304	2	
-	211 405 475 A	Distance piece 28.25 mm - Steering knuckle ..... from Chassis No. 999 305	2	
-	211 405 477	Distance piece 28.1 mm - Steering knuckle ..... up to Chassis No. 999 304	2	
-	211 405 477 A	Distance piece 28.1 mm - Steering knuckle ..... from Chassis No. 999 305	2	
40	211 405 517	Sealing ring - Pin from Chassis No. 1 144 282 ...	4	
41	211 405 519	Washer - Sealing ring .....	4	
-	211 405 521	Pin 20 mm dia. - Torsion arm link .....	4	
42	211 405 521 A	Pin 22 mm dia. - Torsion arm link .....	4	
-	211 405 527	Shim 21.5 mm dia. - Torsion arm link pin .....	32	
43	211 405 527 A	Shim 23.5 mm dia. - Torsion arm link .....	32	
44	211 405 533	Protection cap .....	4	
-	211 405 537	Protection plate - Link pin gasket .....	4	

Key No.	Part No.	Description	Quantity	Type and model
45	211 405 537 A	Protection plate - Link pin gasket .....	4	
		from Chassis No. 1 144 282		
46	211 405 543	Stop screw 21 mm - Steering knuckle .....	2	
-	211 405 545	Stop screw 19 mm - Steering knuckle .....	2	
-	211 405 547	Stop screw 20 mm - Steering knuckle .....	2	
47	N 12 228 2	Spring washer B 8 .....	2	
48	N 11 008 8	Nut, hex. M 8 .....	2	
-	211 405 615	Brake drum, front .....	2	
		up to Chassis No. 20 - 117 901		
-	211 405 615 A	Brake drum, front .....	2	
		from Chassis No. 20 - 117 902 up to 1 144 281		
49	211 405 615 C	Brake drum, front .....	2	M 216
		from Chassis No. 1 144 282	2	
		(only together with 211 405 643)		
50	211 405 625	Taper roller bearing 59 mm dia. - .....	2	M 216
		Front wheel (inner)		
		from Chassis No. 1 144 282	2	
-	211 405 627	Taper roller bearing 72 mm dia. - .....	2	
		Front wheel (inner)		
		up to Chassis No. 1 144 281		
-	211 405 631	Spacer - Front wheel bearing, inner .....	2	
		up to Chassis No. 1 144 281		
-	211 405 641 A	Oil seal - Front wheel bearing, inner .....	2	
		up to Chassis No. 1 144 281		
51	211 405 641 B	Oil seal - Front wheel bearing, inner .....	2	M 216
		from Chassis No. 1 144 282	2	
-	211 405 643	Spacer - Brake drum .....	2	M 216
		from Chassis No. 1 144 282	2	
-	211 405 649	Extractor ring .....	2	
		up to Chassis No. 20 - 117 901		
-	111 405 627	Taper roller bearing 62 mm dia. .....	2	
		up to Chassis No. 1 144 281		
52	211 405 645	Taper roller bearing 45 mm dia. .....	2	M 216
		from Chassis No. 1 144 282	2	
-	211 405 661	Thrust washer 54x22 - Front wheel (outer) .....	2	
		up to Chassis No. 1 144 281		

## MAIN GROUP

4

FRONT AXLE  
STEERING

## Front suspension

Key No.	Part No.	Description	Quantity	Type and model
53	111 405 661	Thrust washer 38×20 – Front wheel (outer) . . . . . from Chassis No. 1 144 282	2 2	M 216
-	211 405 671	Nut, hex. M 22×1.5 – Steering knuckle, left . . . . . up to Chassis No. 1 144 281	2	
54	211 405 671 A	Nut, hex. M 18×1 – Steering knuckle, left . . . . . from Chassis No. 1 144 282	2 2	M 216
-	211 405 672	Nut, hex. M 22×1.5 – Steering knuckle, right . . . . . up to Chassis No. 1 144 281	2	
-	211 405 672 A	Nut, hex. M 18×1 – Steering knuckle, right . . . . . from Chassis No. 1 144 282	2 2	M 216
-	211 405 681	Lock plate – Steering knuckle nut . . . . . up to Chassis No. 1 144 281	2	
55	111 405 681	Lock plate – Steering knuckle nut . . . . . from Chassis No. 1 144 282	2 2	M 216
-	211 405 691	Grease cap – Front wheel, left . . . . . up to Chassis No. 1 144 281	1	
56	211 405 691 A	Grease cap – Front wheel . . . . . from Chassis No. 1 144 282	2 2	M 216
-	211 405 692	Grease cap – Front wheel, right . . . . . up to Chassis No. 1 144 281	1	
-	311 405 381	Plug for grease cap – Front wheel, right . . . . . from Chassis No. 1 144 282	1 1	M 216

## MAIN GROUP

4

FRONT AXLE  
STEERING

## Torsion springs 263

Key No.	Part No.	Description	Quantity	Type and model
<b>TORSION SPRINGS</b>				
-	211 411 021	Torsion spring (five leaves) . . . . . up to Chassis No. 20 – 117 901	1 2	211-216,231-238,261-264 221-228,241-244,271-274
-	211 411 023	Torsion spring (four leaves) . . . . . up to Chassis No. 20 – 117 901	1	211-216,231-238,261-264
57	211 411 033	Torsion spring (nine leaves) . . . . . from Chassis No. 20 – 117 902	2	
58	*111 411 151	Grub screw – Torsion spring mounting . . . . .	6	
59	*111 411 155	Nut – Grub screw . . . . .	6	
60	211 411 309	Stabilizer 18 mm dia. . . . . from Chassis No. 216 000 001	1	211-268
-	271 411 309	Stabilizer 16 mm dia. . . . . from Chassis No. 216 000 001	1	271, 274
61	211 411 313	Rubber cushion, left – Stabilizer . . . . .	1	211-268
-	271 411 313	Rubber cushion, left – Stabilizer . . . . .	1	271, 274
-	211 411 314	Rubber cushion, right – Stabilizer . . . . .	1	211-268
-	271 411 314	Rubber cushion, right – Stabilizer . . . . .	1	271, 274
62	211 411 323	Spring retaining clip, large . . . . .	2	
63	211 411 333	Spring clip – large, left – Stabilizer . . . . .	1	
-	211 411 334	Spring clip – large, right – Stabilizer . . . . .	1	
64	211 411 337	Spring clip – small, left – Stabilizer . . . . .	1	
-	211 411 338	Spring clip – small, right – Stabilizer . . . . .	1	
65	211 411 343	Plate, large . . . . .	2	
66	N 10 247 3	Bolt, hex. head M 8×35 DIN 933 galvanized . . . . .	2	
67	N 11 008 3	Nut, hex. M 8 DIN 934 galvanized . . . . .	2	
68	N 12 008 2	Lock washer B 8 DIN 127 galvanized . . . . .	2	

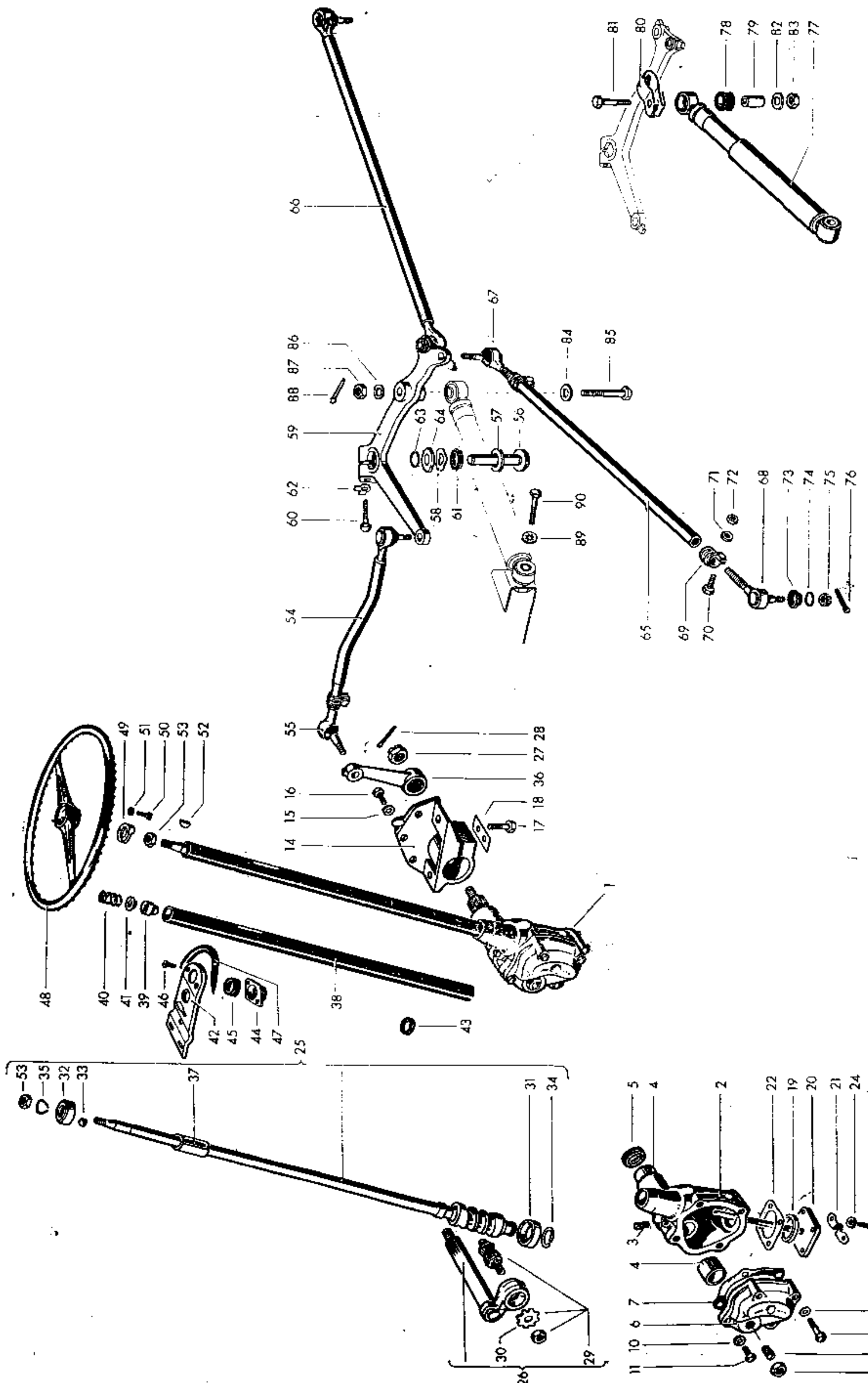


Key No.	Part No.	Description	Quantity	Type and model
<b>SHOCK ABSORBERS</b>				
-	211 413 031	Shock absorber, front up to Chassis No. 20 - 117 901 (211 413 031/A are supplied)	2	
-	*211 413 031 B	Shock absorber (adjustable) from Chassis No. 20 - 117 902	2	
-	111 498 121	1 set of grommets with bushes for adjustable shock absorbers	x	
-	*111 413 031 G	Shock absorber, front from Chassis No. 20 - 117 902 up to 215 190 000 (111 413 031 F/G/113 413 031 J/111 413 035 are supplied)	2	211-268
-	211 513 031 F	Shock absorber, front from Chassis No. 216 000 001 (211 513 031 E/F are supplied)	2	211-268
-	*111 413 031 N	Shock absorber, front (heavy duty) from Chassis No. 20 - 117 902 up to 217 029 667 (111 413 031 M/N/Q are supplied)	2	M 106
69	211 513 031 H	Shock absorber, front (heavy duty) from Chassis No. 217 029 668	2	M 106
-	271 513 031 A	Shock absorber, front from Chassis No. 20 - 117 902 (replace only in pairs up to Chassis No. 276 190 000)	2	271, 274
70	*111 413 371 A	Bush - Rubber grommet	4	
71	*111 413 381 A	Grommet (rubber) - Shock absorber 211 413 031; 111 413 031 G/F/N; 211 513 031 E/F/H; 271 513 031 A	4	
-	*111 413 391	Shim - Shock absorber mounting from Chassis No. 20 - 117 902	2	M 106
-	*111 413 401 A	Bolt - Shock absorber up to Chassis No. 971 549	2	
-	*111 413 403 A	Bolt - Shock absorber (oversize) up to Chassis No. 971 549	x	
72	211 413 401	Bolt M 12x91 - Shock absorber from Chassis No. 971 550	2	
73	N 12 012 1	Lock washer B 12 DIN 127	2	
74	N 11 020 2	Nut, hex. M 12x1.5 DIN 934	2	
75	N 12 112 1	Spring washer J 12.5 DIN 6798	2	
76	N 12 111 1	Spring washer J 10.5 DIN 6798	2	
77	N 11 010 2	Nut, hex. M 10 DIN 934 galvanized - Shock absorber, lower	2	
-	*111 413 401 B	Bolt - Shock absorber 111 413 031 N up to Chassis No. 971 549	2	M 106
-	211 413 401 A	Bolt M 12x95 - Shock absorber from Chassis No. 971 550	2	M 106



**Genuine VW Parts**  
**rigidly factory inspected**





Key No.	Part No.	Description	Quantity	Type and model
---------	----------	-------------	----------	----------------

STEERING

-	211 415 049	Steering gear, without steering drop arm (LHD) .. up to Chassis No. 20 - 117 901	1	211-273
1	211 415 049 A	Steering gear, without steering drop arm (LHD) .. from Chassis No. 20 - 117 902	1	211-273
-	211 415 049 C	Steering gear, without steering drop arm (LHD) .. with locking sleeve - Steering ignition lock from Chassis No. 20 - 117 902	1	M 56
-	214 415 049 A	Steering gear, without steering drop arm (RHD) .. from Chassis No. 20 - 117 902	1	214-274
2	211 415 105 B	Case - Steering gear (LHD) ..... for steering gears 211 415 049/A/C	1	211-273
-	214 415 105	Case - Steering gear (RHD) ..... for steering gears 214 415 049/A	1	214-274
3	211 415 117	Oil plug M 10x1 .....	1	
4	211 415 119	Bearing bush .....	2	
5	N 14 907 1	Seal A 25x36x7 .....	1	
6	211 415 129	Cover - Steering gear case (LHD) .....	1	211-273
-	214 415 129	Cover - Steering gear case (RHD) .....	1	214-274
-	211 415 131 A	Cover - Steering gear case (Ate) .....	1	
7	211 415 135 A	Gasket - Steering gear cases 211 415 105 B and 214 415 105 up to Chassis No. 374 810 and Ate-Steerings	1	
8	111 415 143	Adjusting screw up to Steering gear No. 605 616	1	
-	211 415 143	Adjusting screw (Ate) ..... and from Steering gear No. 605 617	1	
9	N 11 162 1	Nut, hex. M 12x1.5 .....	1	
10	N 12 009 1	Lock washer A 8 .....	2	
-	N 10 240 4	Bolt, hex. head M 8x20 .....	1	
11	N 10 243 1	Bolt, hex. head M 8x28 S .....	1	
-	N 10 247 3	Bolt, hex. head M 8x35 .....	1	

MAIN GROUP



FRONT AXLE STEERING

Steering

Key No.	Part No.	Description	Quantity	Type and model
12	N 13 809 1	Washer C 8×14	2	
13	N 10 340 4	Bolt, hex. head M 8×40	2	
14	211 415 151 A	Bracket - Steering gear	1	
15	N 12 011 2	Lock washer A 10	5	
16	N 10 253 2	Bolt, hex. head M 10×22	5	
17	N 10 440 1	Bolt, hex. head AM 10×40 - Steering gear mounting	2	
18	211 415 159	Lock plate - Steering gear mounting	1	
19	211 415 161	Spacer	1	
-	211 415 163 A	End cover with guide tube (Ate)	1	
20	211 415 163 B	End cover with guide tube	1	
21	211 415 169	Cable clip for steering gear	1	
22	211 415 171	Shim 0.1 mm	x	
-	211 415 173	Shim 0.125 mm	x	
-	211 415 175	Shim 0.15 mm	x	
-	211 415 177	Shim 0.3 mm	x	
-	211 415 181	Shim 0.05 mm (Ate)	x	
-	211 415 183	Shim 0.3 mm (Ate)	x	
23	N 10 216 7	Bolt, hex. head M 6×18	4	
24	N 13 804 2	Gasket A 6×10	2	
-	211 415 205 D	Steering worm for steering gears 211 415 049 and 214 415 049 A	1	
25	211 415 205 E	Steering worm for steering gears 211 415 049 A/C and 214 415 049	1	

MAIN GROUP



FRONT AXLE STEERING

Steering 269

Key No.	Part No.	Description	Quantity	Type and model
26	211 415 221	Steering lever shaft with peg-faper roller bearing	1	
27	N 11 216 2	Nut - Slotted M 20×1.5 DIN 937	1	
28	N 12 538 1	Cotter pin 4×40 DIN 94	1	
29	211 415 223	Taper roller bearing (double row)	1	
30	211 415 225	Lock plate for taper roller bearing	1	
-	211 415 225 A	Lock plate for taper roller bearing (Ate)	1	
-	N 14 840 1	Gasket A 20×30×7 DIN 3760	1	
31	211 415 231	Ball race, lower 42 mm dia.	1	
32	211 415 233 B	Ball race, upper 41 mm dia.	1	
33	211 415 235	Ball 1/4"	28	
34	211 415 237	Retaining ring for ball race, lower	1	
35	211 415 238	Retaining ring for ball race, upper	1	
36	211 415 371 A	Drop arm (LHD)	1	211-273
-	214 415 371 A	Drop arm (RHD)	1	214-274
37	211 415 521 B	Locking sleeve - Steering ignition lock	1	M 56
38	211 415 555 A	Tube - Steering column	1	
-	211 415 567	Flange - Steering column tube (Ate)	1	
39	211 415 585	Ball bearing	1	
40	211 415 587	Compression spring	1	

## MAIN GROUP

4

FRONT AXLE  
STEERING

Steering

Key No.	Part No.	Description	Quantity	Type and model
41	211 415 589 A	Spring seat .....	1	
42	211 415 605 C	Bracket - Steering column tube from Chassis No. 20 - 117 902	1	
43	211 415 617	Gasket - Steering column tube from Chassis No. 20 - 041 712	1	
44	211 415 631 A	Cage - Steering column tube from Chassis No. 20 - 117 902	1	
45	211 415 637 A	Cushion (rubber) - Steering column tube bracket from Chassis No. 20 - 041 712	1	
46	N 14 276 1	Screw, countersunk raised head, AM 6x12 DIN 7988 chromium plated	2	
47	211 415 639	Protective rubber - Steering column bracket from Chassis No. 20 - 117 902	1	
-	211 415 651	Steering wheel, black up to Chassis No. 20 - 041 711	1	
-	221 415 655	Steering wheel, silver beige, without self-cancelling ring from Chassis No. 20 - 041 712 up to 374 810	1	241, 244
		ring from Chassis No. 374 811	1	221-228, 241, 244
48	211 415 655	Steering wheel, black, without self-cancelling ring from Chassis No. 20 - 041 712 up to 374 810	1	241, 244
		from Chassis No. 20 - 041 712	1	211-238, 261-274
49	211 415 657	Self-cancelling ring on steering wheel .....	1	
50	N 10 688 1	Screw, cheese head AM 3x8 DIN 84 .....	3	
51	N 12 223 1	Spring washer A 3 DIN 137 .....	3	

## MAIN GROUP

4

FRONT AXLE  
STEERING

Steering

271

Key No.	Part No.	Description	Quantity	Type and model
52	N 12 707 1	Woodruff key 5x7.5 DIN 6888 .....	1	
53	N 11 164 2	Nut, hex. M 16x1.5 DIN 936 .....	1	
-	211 415 701	Drag link (LHD) up to Chassis No. 20 - 117 901	1	211-273
54	211 415 701 D	Drag link .....	1	
		from Chassis No. 20 - 117 902		
-	214 415 701	Drag link (RHD) up to Chassis No. 20 - 117 901	1	214-274
55	211 415 712 D	no longer available superseded by: 211 415 701 D		
-	211 415 727	Shaft between upper and lower swing lever (LHD) up to Chassis No. 20 - 117 901	1	211-273
56	211 499 171	1 set consisting of shaft for swing lever with bushes and shims from Chassis No. 20 - 117 902	1	
-	214 415 727	Shaft between upper and lower swing lever (RHD) up to Chassis No. 20 - 117 901	1	214-274
-	211 415 731	Swing lever, lower up to Chassis No. 20 - 117 901	1	
-	211 415 735	Thrust washer for spring washer lower up to Chassis No. 20 - 117 901	x	
-	211 415 735	Thrust washer for spring washer, upper from Chassis No. 20 - 117 902 up to 267 604	x	
57	211 415 739	Thrust washer, lower from Chassis No. 20 - 117 902	1	
-	211 405 431	Thrust washer up to Chassis No. 20 - 117 901	2	
-	N 12 244 1	Lock washer B 24x44 DIN 137 .....	1	
		up to Chassis No. 267 604		
58	211 415 757	Lock washer for swing lever from Chassis No. 267 605	1	
-	211 415 741	Swing lever, upper (LHD) up to Chassis No. 20 - 117 901	1	211-273
-	214 415 741	Swing lever, upper (RHD) up to Chassis No. 20 - 117 901	1	214-274

MAIN GROUP



FRONT AXLE STEERING

Steering

Key No.	Part No.	Description	Quantity	Type and model
59	211 415 741 C	Swing lever (LHD) ..... from Chassis No. 20 - 117 902	1	211-273
-	214 415 741 B	Swing lever (RHD) ..... from Chassis No. 20 - 117 902	1	214-274
-	211 415 747 A	Bolt, hex. head for swing lever ..... up to Chassis No. 215 190 000	x	
60	N 10 142 1	Bolt, hex. head M 12x1.5x50 DIN 960 ..... from Chassis No. 216 000 001	1	
61	211 415 749	Gasket - Protection cap ..... from Chassis No. 216 000 001	1	
62	211 415 751	Lock plate .....	2	
63	211 415 753	Sealing washer for swing lever .....	1	
-	211 415 755	Protection cap up to Chassis No. 215 190 000 .....	1	
64	211 415 755 A	Protection cap from Chassis No. 216 000 001 .....	1	
-	211 415 757	Lock washer for swing lever ..... from Chassis No. 267 605	1	
-	211 415 801	Tie rod, left ..... up to Chassis No. 20 - 117 901	1	
65	211 415 801 D	Tie rod, left (adjustable) ..... from Chassis No. 20 - 117 902	1	
-	211 415 802	Tie rod, right (adjustable) ..... up to Chassis No. 20 - 117 901	1	
66	211 415 802 D	Tie rod, right ..... from Chassis No. 20 - 117 902	1	
-	211 415 811	Tie rod end, left-hand thread ..... up to Chassis No. 20 - 117 901	1	
67	131 415 811	Tie rod end, left-hand thread ..... from Chassis No. 20 - 117 902	1	
-	211 415 812	Tie rod end, right-hand thread ..... up to Chassis No. 20 - 117 901	1	
68	131 415 812	Tie rod end, right-hand thread ..... from Chassis No. 20 - 117 902	1	
69	111 415 841 A	Clamp 18 mm dia. ....	2	

MAIN GROUP



FRONT AXLE STEERING

Steering 273

Key No.	Part No.	Description	Quantity	Type and model
70	N 10 171 1	Bolt, hex. head M 8x1x32 .....	3	
71	N 12 009 1	Lock washer A 8 .....	3	
72	N 11 018 2	Nut, hex. M 8x1 .....	3	
-	N 11 165 3	Nut, hex. - Tie rod M 18x1.5 ..... (with left-hand thread)	2	
-	N 11 165 2	Nut, hex. - Tie rod M 18x1.5 ..... (with right-hand thread)	1	
-	111 415 835 A	Dust seal .....	6	
73	113 415 835	Dust seal for maintenance-free tie rod ends .....	6	
74	111 415 837	Retaining ring 27 mm dia. - Dust seal 113 415 835	6	
-	113 415 837	Retaining ring 8.2 mm dia. - Dust seal .....	6	
-	211 415 841	Taper ring - Tie rod 211 415 802 ..... up to Chassis No. 20 - 117 901	3	
-	211 415 851	Lock plate ..... up to Chassis No. 20 - 117 901	3	
-	N 18 515 1	Grease nipple A 6 .....	6	
-	N 18 516 1	Grease nipple A 8 .....	5	
-	N 18 511 2	Grease nipple C 8 .....	2	
75	N 11 210 1	Nut, slotted, M 10x1 .....	6	
76	N 12 522 1	Cotter pin 2x22 .....	6	
77	211 415 901 F	Steering damper .....	1	
78	113 415 907 C	Grommet - Steering damper 211 415 901/B/F .....	2	
-	211 415 907 C	Grommet - Steering damper 211 415 901 A/C ...	2	
79	211 415 909	Bush - Grommet .....	2	

Key No.	Part No.	Description	Quantity	Type and model
-	211 415 921	Clamp half with bracket up to Chassis No. 20 - 117 901	1	
-	211 415 931	Clamp half up to Chassis No. 20 - 117 901	1	
-	N 10 142 2	Bolt, hex. head M 12×1.5×50	2	
-	N 11 020 2	Nut, hex. M 12×1.5	2	
-	N 12 232 1	Spring washer B 12	2	
-	N 10 240 1	Bolt, hex. head M 8×20	4	
-	N 11 008 3	Nut, hex. M 8	4	
-	N 12 228 2	Spring washer B 8	4	
80	211 415 931 A	Clamp on swing lever up to Chassis No. 851 389	1	
81	N 10 450 1	Bolt, hex. head M 10×50	1	
82	N 12 010 2	Lock washer B 10	1	
83	N 11 010 2	Nut, hex. M 10	1	
-	211 415 935	Mounting bracket - Steering damper up to Chassis No. 20 - 117 901	1	
84	211 415 939	Washer - Steering damper	1	
85	N 10 471 1	Bolt, hex. head M 10×72 S	1	
86	N 12 010 2	Lock washer B 10	1	
87	N 11 010 2	Nut, hex. M 10	1	
88	N 12 522 1	Cotter pin 2×22	1	
89	N 12 111 1	Lock washer J 10.5	1	
90	N 10 440 1	Bolt, hex. head M 10×40	1	
-	211 499 121 A	Bolt - Front axle mounting from Chassis No. 20 - 117 902	8	
-	N 12 012 1	Lock washer B 12	8	
-	211 499 131	Lock plate	8	

Part No.	Description	Quantity
<b>SP SETS</b>		
211 498 021	1 set of king pins with bushes and torsion arm link pins up to Chassis No. 999 304 comprising:	
211 405 367 A	King pin, upper with needle bearing	1
211 405 365 A	King pin, lower with needle bearing	1
211 405 317	Bush - King pin	2
211 405 431 A	Thrust washer - King pin	2
211 405 439	Seal - King pin	6
211 405 537	Protection plate - Link pin gasket	2
211 405 533	Protection cap	2
211 405 521	Pin - Torsion arm link	2
211 405 527	Shim - Torsion arm link pin	16
N 11 603 1	Expansion plug 30	1
211 498 021 A	1 set of king pins with bushes and torsion arm link pins 20 mm dia. from Chassis No. 999 305 up to 1 144 281 comprising:	
211 405 317 B	Bush - King pin with needle bearing	2
211 405 365 B	King pin, lower with needle bearing	1
211 405 367 B	King pin, upper	1
211 405 431 B	Thrust washer - King pin	2
211 405 439	Seal - King pin	6
211 405 521	Pin - Torsion arm link	2
211 405 527	Shim - Torsion arm link pin	16
211 405 533	Protection cap	2
211 405 537	Protection plate - Link pin gasket	2
N 11 603 1	Expansion plug 30	1
211 498 021 B	1 set of king pins with bushes and torsion arm link pins 22 mm dia. from Chassis No. 1 144 282 comprising:	
211 405 317 B	Bush - King pin	2
211 405 365 C	King pin, lower with needle bearing	1

Part No.	Description	Quantity
211 405 367 C	King pin, upper with needle bearing .....	1
211 405 431 B	Thrust washer .....	2
211 405 439	Seal - King pin .....	6
211 405 517	Seal - Torsion arm link pin .....	2
211 405 519	Washer - Packing .....	2
211 405 521 A	Pin - Torsion arm link .....	2
211 405 527 A	Shim .....	16
211 405 533	Protection cap .....	2
211 405 537 A	Protection plate .....	2
111 405 681	Lock plate .....	1
N 10 451 1	Bolt, hex. head AM 10×50 .....	2
N 11 010 2	Nut, hex. M 10 .....	2
N 11 603 1	Cover plate .....	1
N 11 655 2	Washer 11.5 .....	2
N 12 010 2	Lock washer B 10 .....	2
N 12 522 1	Cotter pin 2×22 .....	2
<b>211 498 041</b>	<b>1 set of torsion arm link pins 20 mm dia. with needle bearings and shims</b> up to Chassis No. 1 144 281 comprising:	
211 405 421 A	Needle bearing .....	4
211 405 521	Pin - Torsion arm link .....	4
211 405 527	Shim - Torsion arm link pin .....	40
<b>211 498 041 A</b>	<b>1 set of torsion arm link pins 22 mm dia. with needle bearings and shims</b> from Chassis No. 1 144 282 comprising:	
211 405 421 B	Needle bearing .....	4
211 405 439	Seal - King pin .....	4
211 405 517	Seal - Torsion arm link pin .....	4
211 405 519	Washer - Packing .....	4
211 405 521 A	Pin - Torsion arm link .....	4
211 405 527 A	Shim .....	33
211 405 533	Protection cap .....	4
211 405 537 A	Protection plate .....	4

Part No.	Description	Quantity
<b>211 498 071</b>	<b>1 set of front wheel bearings</b> up to Chassis No. 1 144 281 comprising:	
211 405 627	Front wheel bearing, inner .....	1
211 405 631	Spacer .....	1
211 405 641 A	Oil seal .....	1
111 405 627	Front wheel bearing, outer .....	1
211 405 661	Thrust washer 54×22 .....	1
211 405 681	Lock plate .....	1
<b>211 498 071 A</b>	<b>1 set of front wheel bearings</b> up to Chassis No. 1 144 281 M 215, M 216 from Chassis No. 1 144 282 comprising:	
211 405 625	Front wheel bearing, inner .....	1
211 405 641 B	Oil seal up to Chassis No. 217 190 000 .....	1
211 405 641 C	Oil seal from Chassis No. 218 000 001 .....	1
211 405 645	Front wheel bearing, outer .....	1
111 405 661	Thrust washer 38×20 .....	1
111 405 681	Lock plate up to Chassis No. 217 190 000 .....	1
<b>211 498 101</b>	<b>1 set of stabilizer mounting parts for left-hand side</b> Type 211-268 comprising:	
211 411 313	Rubber cushion, left - Stabilizer .....	1
211 411 323	Spring retaining clip, large .....	1
211 411 333	Spring clip - large, left - Stabilizer .....	1
211 411 343	Plate, large .....	1
211 411 337	Spring clip - small, left - Stabilizer .....	1
N 10 335 4	Bolt, hex. head M 8×35 .....	1
N 11 008 3	Nut, hex. M 8 .....	1
N 12 008 2	Lock washer B 8 .....	1



Part No.	Description	Quantity
211 498 102	<b>1 set of stabilizer mounting parts for right-hand side</b> Type 211-268	
	comprising:	
211 411 314	Rubber cushion, right - Stabilizer .....	1
211 411 323	Spring retaining clip, large .....	1
211 411 334	Spring clip - large, right - Stabilizer .....	1
211 411 343	Plate, large .....	1
211 411 338	Spring clip - small, right - Stabilizer .....	1
N 10 335 4	Bolt, hex. head M 8x35 .....	1
N 11 008 3	Nut, hex. M 8 .....	1
N 12 008 2	Lock washer B 8 .....	1
111 498 121	<b>1 set of grommets with bushes for adjustable shock absorbers</b>	
	comprising:	
	Grommet .....	2
	Bush - Rubber grommet .....	2
211 498 171	<b>1 set: consisting of shaft for swing lever with bushes and shims</b> from Chassis No. 20 - 117 902	
	comprising:	
211 401 185	Bush - Swing lever .....	2
211 415 727 A	Shaft - Swing lever .....	1
211 415 739	Thrust washer, lower .....	1
211 415 751	Lock plate .....	2
211 415 753	Sealing washer for swing lever .....	1
211 415 755 A	Protection cap .....	1
211 415 757	Lock washer for swing lever .....	1
211 415 749	Gasket - Protection cap .....	1
N 10 142 1	Bolt, hex. head M 12x1.5x50 .....	1

Part No.	Description	Quantity
211 498 191	<b>Steering damper (for service installation)</b> up to Chassis No. 20 - 117 901	
	comprising:	
211 415 901 F	Steering damper .....	1
211 415 935	Mounting bracket - Steering damper .....	1
211 415 921	Clamp half with bracket .....	1
211 415 931	Clamp half .....	1
N 10 440 1	Bolt, hex. head M 10x40 .....	2
N 11 010 4	Nut, hex. M 10 .....	2
N 12 230 2	Spring washer B 10 .....	2
N 10 240 1	Bolt, hex. head M 8x20 .....	4
N 11 008 3	Nut, hex. M 8 .....	4
N 12 228 2	Spring washer B 8 .....	4