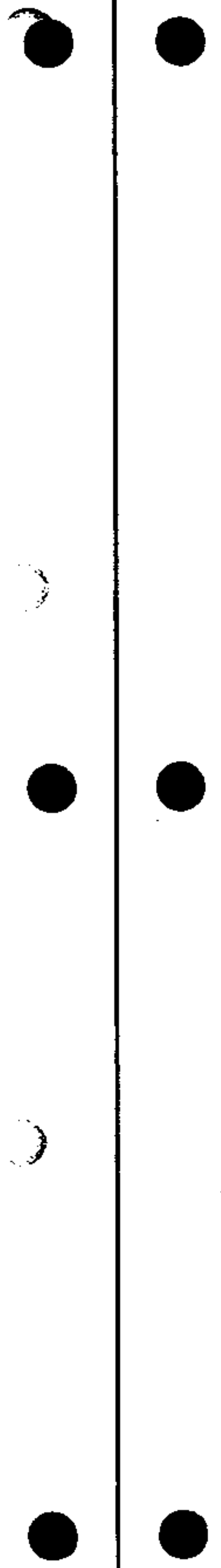


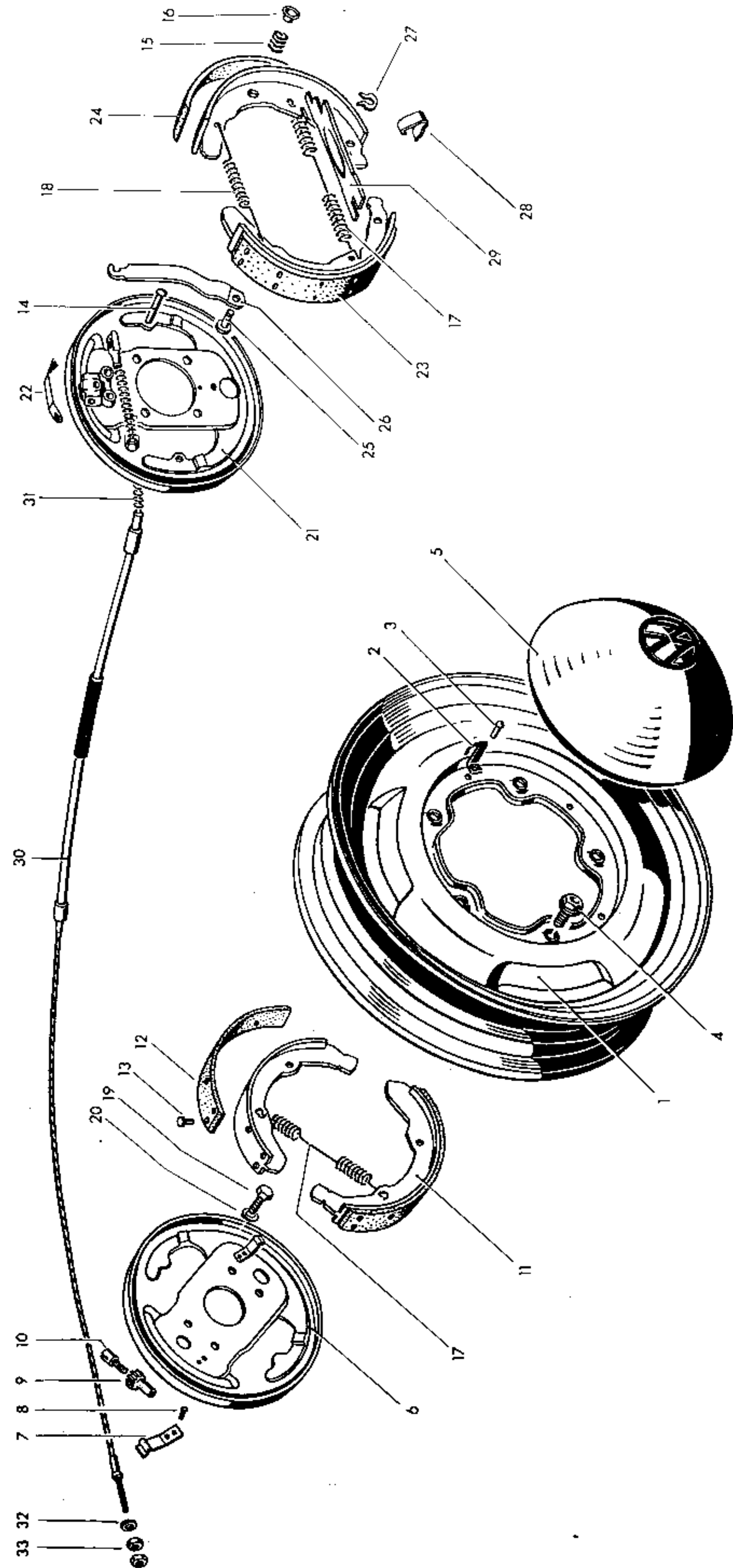
MAIN GROUP



ROAD WHEELS BRAKES

	Illustration
01 Road wheels	32
09 Hydraulic brakes	32
11 Brake cylinders and lines	33+A 33
98 Repair kits	—





Key No.	Part No.	Description	Quantity	Type and model
---------	----------	-------------	----------	----------------

WHEEL DISCS

-	211 601 023 A	Wheel disc 3.5 D×16 up to Chassis No. 20 - 117 901	5	
-	211 601 027 E	Wheel disc 4.5 K×15 from Chassis No. 20 - 117 902 up to 1 219 510	5	
1	211 601 027 F	Wheel disc 5 JK×14 up to Chassis No. 1 219 510 from Chassis No. 1 219 511	5 5	M 215
2	111 601 131	Spring - Hub cap	25	
3	N 13 407 1	Rivet, buffon head, 4.5×7	25	
4	211 601 139	Bolt - Wheel disc	20	
5	111 601 151	Hub cap - Wheel disc	4	211-216, 231-238, 261-264
-	113 601 151	Hub cap (chromium plated) - Wheel disc	4	211-228, 241, 244, 271, 274
-	241 601 155 B	Rim embellisher - Wheel disc 5 J K×14 from Chassis No. 1 219 511	5	241, 244
-	111 601 161	Ferrule - Hub cap	16	
-	311 601 361	Rubber valve 15.2 mm dia. - Tubeless tires up to Chassis No. 1 219 510 from Chassis No. 1 219 511	5 5	M 215

MAIN GROUP



ROAD WHEELS
BRAKES

Hydraulic brakes

Key No.	Part No.	Description	Quantity	Type and model
HYDRAULIC BRAKES				
-	211 609 139 A	Back plate - Front brake, left from Chassis No. 20 - 117 902 up to 1 144 281	1	
6	211 609 139 B	Back plate - Front brake, left from Chassis No. 1 144 282	1	M 216
-	211 609 140	Back plate - Front brake, right up to Chassis No. 20 - 117 901	1	
-	211 609 140 A	Back plate - Front brake, right from Chassis No. 20 - 117 902 up to 1 144 281	1	
-	211 609 140 B	Back plate - Front brake, right from Chassis No. 1 144 282	1	M 216
-	211 609 185	Leaf spring - Adjusting device (screwed)	4	
-	N 12 003 1	Lock washer B 3	8	
-	N 11 225 1	Screw, button head AM 3x4	8	
-	211 609 185 A	Leaf spring - Adjusting device (peened), up to Chassis No. 20 - 117 901	4	
-	211 609 185 B	Leaf spring - Adjusting device, front from Chassis No. 20 - 117 902 up to 1 144 281	4	
-	N 13 404 1	Rivet, button head 2.6x5	8	
7	211 609 185 C	Leaf spring - Adjusting device, front from Chassis No. 1 144 282	4	M 216
8	N 13 657 1	Rivet A 3x6.5	8	
9	113 609 205 A	Adjusting nut - Brake shoe	8	
-	211 609 209	Adjusting screw up to Chassis No. 20 - 069 408	8	

MAIN GROUP



ROAD WHEELS
BRAKES

Hydraulic brakes

Key No.	Part No.	Description	Quantity	Type and model
-	113 609 209	Adjusting screw from Chassis No. 20 - 069 409 up to 20 - 117 901	8	
10	211 609 209 A	Adjusting screw from Chassis No. 20 - 117 902	8	
-	113 609 211	Spacer	4	
-	211 609 237	Brake shoe and lining 40 up to Chassis No. 20 - 069 408	8	
-	211 609 237 A	Brake shoe and lining 40 from Chassis No. 20 - 069 409 up to 20 - 117 901	8	
-	211 609 237 B	Brake shoe and lining 50, front from Chassis No. 20 - 117 902 up to 1 144 281	4	
11	211 609 237 D	Brake shoe and lining 55, front from Chassis No. 1 144 282	4	M 216
-	211 698 111	1 set of brake linings 50, front for Transporter (Jurid) from Chassis No. 20 - 117 902 up to 1 144 281	x	
-	211 698 112	1 set of brake linings 50, front for Transporter (oversize, Jurid) from Chassis No. 20 - 117 902 up to 1 144 281	x	
-	211 698 073	1 set of brake linings 40 for Transporter (Energil) up to Chassis No. 20 - 117 901	x	
-	211 698 074	1 set of brake linings 40 for Transporter (oversize, Energil) up to Chassis No. 20 - 117 901	x	
12	211 698 133 A	1 set of brake linings 55, front for Transporter (Energil) from Chassis No. 1 144 282	x	M 216
-	211 698 134	1 set of brake linings 55, front for Transporter (oversize, Energil) from Chassis No. 1 144 282	x	M 216

MAIN GROUP



ROAD WHEELS
BRAKES

Hydraulic brakes

Key No.	Part No.	Description	Quantity	Type and model
13	N 13 634 1	Rivet C 4×7.5 – Brake lining	40	
-	113 609 279 C	Retaining pin 32 mm up to Chassis No. 20 – 117 901	8	
14	211 609 279	Retaining pin 40 mm from Chassis No. 1 144 282	4 4	M 216
-	113 609 283	Spring – Retaining pin up to Chassis No. 20 – 117 901	8	
15	113 609 283	Spring – Retaining pin from Chassis No. 1 144 282	4 4	M 216
-	113 609 289	Spring seat – Retaining pin up to Chassis No. 20 – 117 901	8	
16	113 609 289	Spring seat – Retaining pin from Chassis No. 1 144 282	4 4	M 216
-	113 609 301	Return spring (lower) – Brake shoe up to Chassis No. 20 – 117 901	4	
-	211 609 301 A	Return spring – Brake shoe, front from Chassis No. 20 – 117 902 up to 1 144 281	4	
17	211 609 301 B	Return spring – Brake shoe from Chassis No. 1 144 282	6 6	M 216
-	113 609 309	Return spring (upper) – Brake shoe from Chassis No. 20 – 069 409 up to 20 – 117 901	8	
-	211 609 309	Return spring – Brake shoe, rear from Chassis No. 20 – 117 902 up to 1 144 281	8	
18	113 609 309 B	Return spring (upper) – Brake shoe, rear from Chassis No. 1 144 282	2 2	M 216
-	211 609 313	Return spring (upper) – Brake shoe up to Chassis No. 20 – 069 408	4	
-	211 609 391	Mounting bolt – Back plate up to Chassis No. 20 – 117 901	8	

MAIN GROUP



ROAD WHEELS
BRAKES

Hydraulic brakes

313

Key No.	Part No.	Description	Quantity	Type and model
-	113 311 215	Mounting bolt – Back plate from Chassis No. 20 – 117 902 up to 1 144 281	8	
19	N 10 020 1	Bolt, hex. head M 10×38 from Chassis No. 1 144 282	8 8	M 216
20	N 12 010 2	Lock washer B 10	8	
-	211 609 439	Back plate – Rear brake, left up to Chassis No. 20 – 117 901	1	
-	211 609 439 A	Back plate – Rear brake, left from Chassis No. 20 – 117 902 up to 1 144 281	1	
21	211 609 439 B	Back plate – Rear brake, left from Chassis No. 1 144 282	1 1	M 216
-	211 609 440	Back plate – Rear brake, right up to Chassis No. 20 – 117 901	1	
-	211 609 440 A	Back plate – Rear brake, right from Chassis No. 20 – 117 902 up to 1 144 281	1	
-	211 609 440 B	Back plate – Rear brake, right from Chassis No. 1 144 282	1 1	M 216
-	211 609 485	Leaf spring – Adjusting device, rear from Chassis No. 20 – 117 902 up to 1 144 281	2	
22	211 609 485 A	Leaf spring – Adjusting device, rear from Chassis No. 1 144 282	2 2	M 216
-	211 609 537 B	Brake shoe and lining 40, rear from Chassis No. 20 – 117 902 up to 1 144 281	4	
23	211 609 537 E	Brake shoe and lining 45, rear from Chassis No. 1 144 282	4 4	M 216
-	211 698 071 A	1 set of brake linings 40, rear for Transporter (Jurid) from Chassis No. 20 – 117 902 up to 1 144 281	x	

MAIN GROUP



ROAD WHEELS
BRAKES

Hydraulic brakes

Key No.	Part No.	Description	Quantity	Type and model
-	211 698 074 A	1 set of brake linings 40, rear for Transporter (oversize, Energil) from Chassis No. 20 - 117 902 up to 1 144 281	x	
24	211 698 093 A	1 set of brake linings 45, rear for Transporter (Energil) from Chassis No. 1 144 282	x	M 216
-	211 698 094	1 set of brake linings 45, rear for Transporter (oversize, Energil) from Chassis No. 1 144 282	x	M 216
-	N 13 634 1	Rivet C 4x7.5 - Brake lining	40	
25	211 609 601 A	Anchor pin - Brake lever	2	
-	211 609 613	Brake lever - Brake shoe, left	1	
		up to Chassis No. 20 - 117 901		
26	211 609 613 B	Brake lever - Brake shoe, left	1	
		from Chassis No. 20 - 117 902		
-	211 609 614	Brake lever - Brake shoe, right	1	
		up to Chassis No. 20 - 117 901		
-	211 609 614 B	Brake lever - Brake shoe, right	1	
		from Chassis No. 20 - 117 902		
-	N 12 228 2	Spring washer B 8	2	
27	211 609 619	C-Washer - Brake lever anchor pin	2	
28	211 609 625	Spring clip - Push bar	2	M 216
		from Chassis No. 1 144 282	2	
-	211 609 631	Push bar - Brake shoe, left	1	
		up to Chassis No. 20 - 117 901		
29	211 609 631 B	Push bar - Brake shoe, left	1	
		from Chassis No. 20 - 117 902		
-	211 609 632	Push bar - Brake shoe, right	1	
		up to Chassis No. 20 - 117 901		

MAIN GROUP



ROAD WHEELS
BRAKES

Hydraulic brake

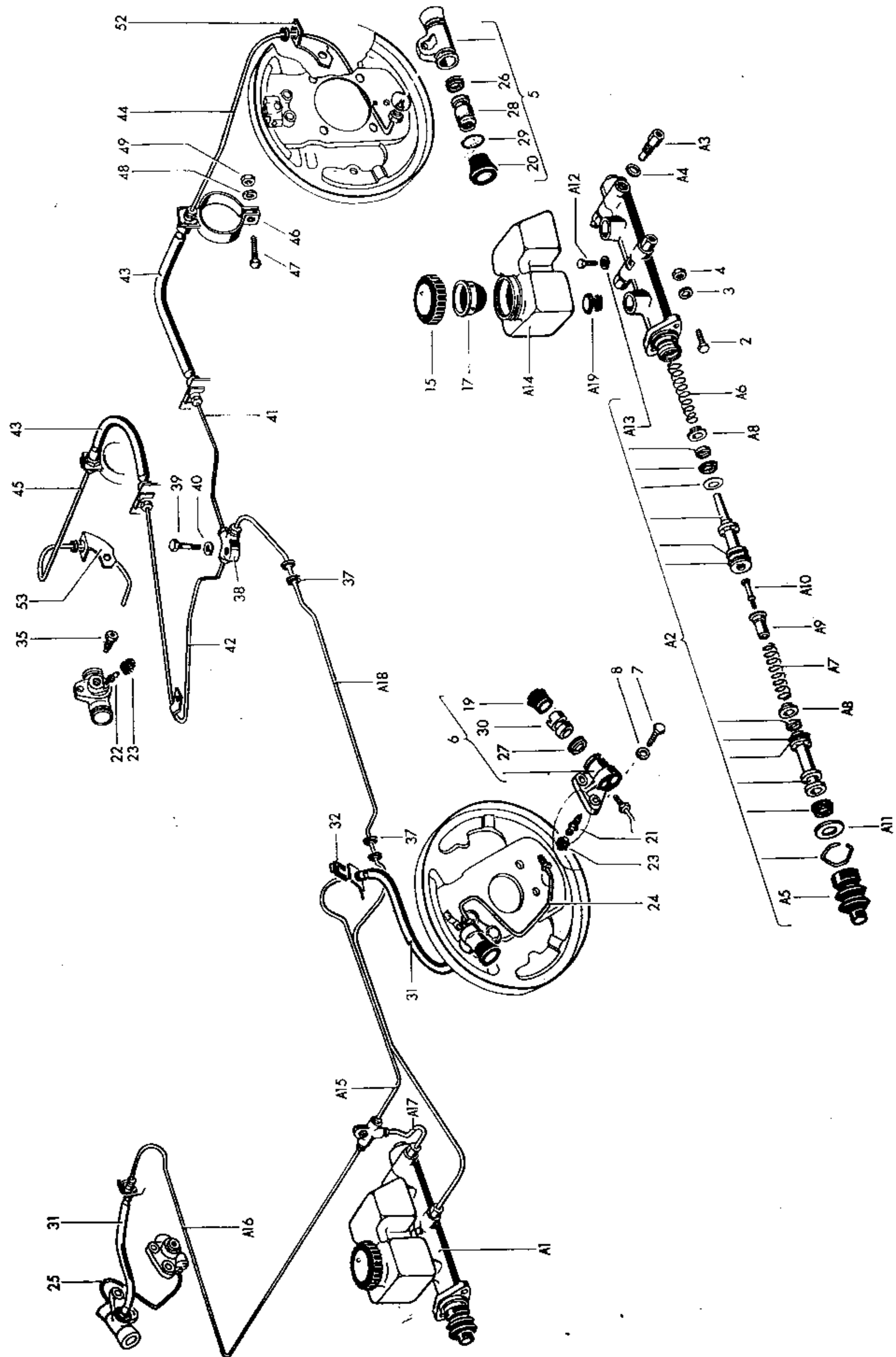
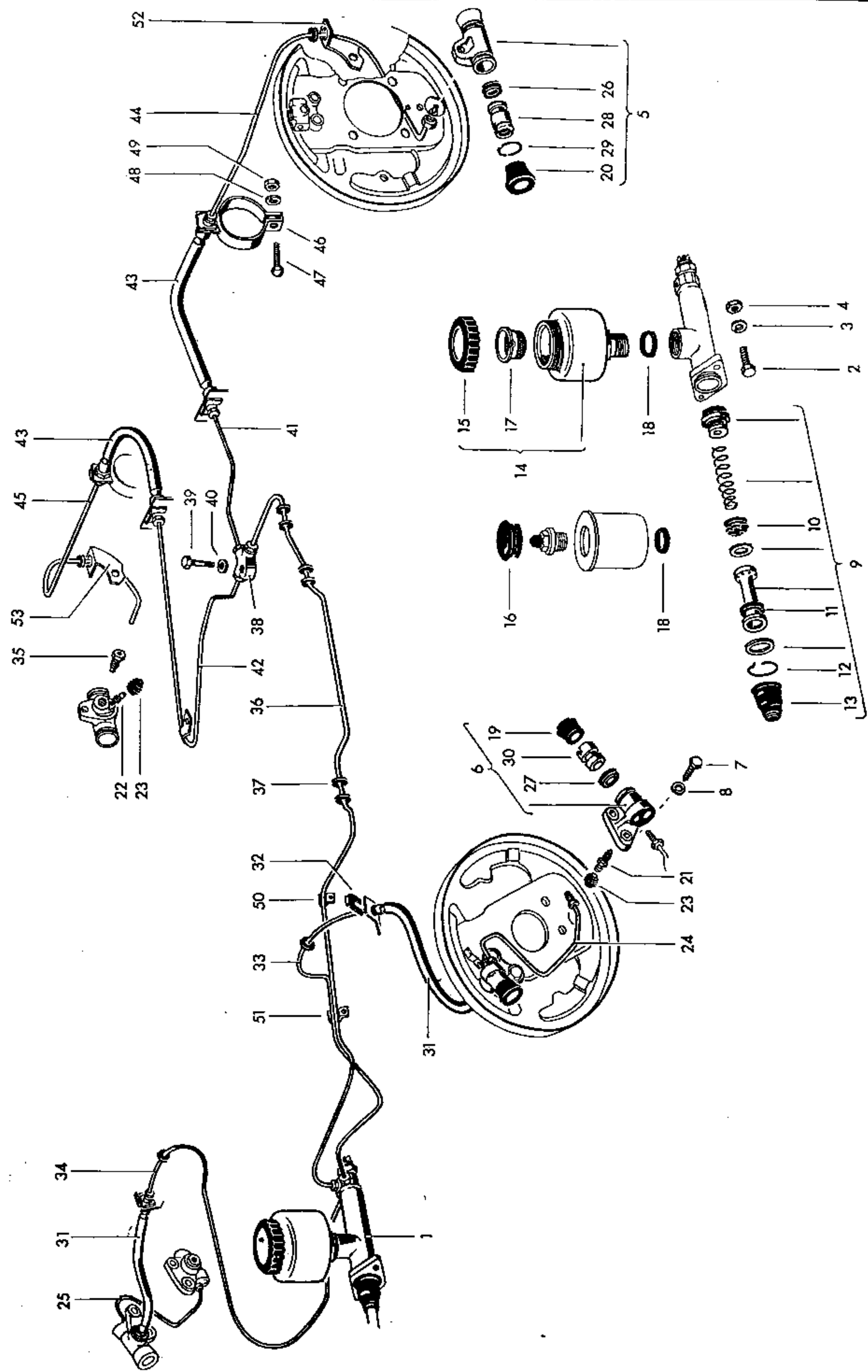
315

Key No.	Part No.	Description	Quantity	Type and model
-	*113 609 625	Spring clip - Push bar	2	
		up to Chassis No. 20 - 117 901		
-	211 609 632 B	Push bar - Brake shoe, right	1	
		from Chassis No. 20 - 117 902		
-	*113 609 637	Bracket - Brake cable, left	1	
		up to Chassis No. 20 - 117 901		
-	211 609 637 A	Bracket - Brake cable, left	1	
		from Chassis No. 20 - 117 902 up to 1 144 281		
-	*113 609 638	Bracket - Brake cable, right	1	
		up to Chassis No. 20 - 117 901		
-	211 609 638 A	Bracket - Brake cable, right	1	
		from Chassis No. 20 - 117 902 up to 1 144 281		
-	N 10 238 3	Bolt, hex. head M 8x15 DIN 933 galvanized	2	
-	N 12 008 2	Lock washer B 8 DIN 127 galvanized	2	
-	211 609 641 A	Leaf spring - Push bar	2	
		from Chassis No. 20 - 117 902 up to 1 144 281		
-	211 609 701 B	Cable - Rear brake (length 3168 mm)	2	
		from Chassis No. 20 - 117 902 up to 501 706		
-	211 609 701 C	Cable - Rear brake (length 3330 mm)	2	
		from Chassis No. 501 707 up to 614 455		
-	211 609 701 E	Cable - Rear brake (length 3460 mm)	2	
		from Chassis No. 614 456 up to 1 144 281		
30	211 609 701-F	Cable - Rear brake (length 3465 mm)	2	
		M 216 and from Chassis No. 1 144 282		
-	211 609 701 G	Cable - Rear brake (length 3232 mm)	2	M 36
		(for Italy only) from Chassis No. 215 098 337		
-	211 609 711	Pressure spring - Brake cable	2	
		up to Chassis No. 1 144 281		
31	211 609 711 A	Pressure spring - Brake cable	2	
		M 216 and from Chassis No. 1 144 282		
-	211 609 721	Cable - Rear brake (length 3264 mm)	2	
		up to Chassis No. 20 - 041 711		

Printed in Germany 735 211 20

11/65

Key No.	Part No.	Description	Quantity	Type and model
-	211 609 721 A	Cable - Rear brake (length 3205 mm) from Chassis No. 20 - 041 712 up to 20 - 117 901	2	
32	N 11 652 1	Washer 7 galvanized	2	
33	N 11 006 2	Nut, hex. M 6 DIN 934 galvanized - Brake cable connection	4	
-	211 609 781	Protection tube - Brake cable 211 609 701 E	2	



Key No.	Part No.	Description	Quantity	Type and model
BRAKE CYLINDERS AND LINES				
1	211 611 011 J	Brake master cylinder 22.2 with reservoir up to Chassis No. 217 019 487 from Chassis No. 217 019 488 up to 217 072 465 (RHD) from Chassis No. 217 072 466 up to 217 148 459	1 1 1	211-216, 224, 228, 231-238, 244, 261-274
-	211 611 011 R	Tandem master cylinder 22.2 without reservoir ... (LHD)	1	M 172: 211-271
A 1	211 611 011 Q	Tandem master cylinder 22.2 with reservoir (LHD) from Chassis No. 227 019 488 up to 227 072 465 (LHD) from Chassis No. 217 019 466 up to 217 148 459	1 1	221, 223, 225, 241, 251, 281, 285
2	N 10 242 5	Bolt, hex. head M 8 x 25 DIN 933 galvanized - ... Master cylinder mounting	2	
3	N 12 008 2	Lock washer B 8 DIN 127 galvanized	2	
4	N 11 008 3	Nut, hex. M 8 DIN 934 galvanized	2	
5	211 611 047 C	Cylinder 22.2 - Rear wheel brake from Chassis No. 20 - 117 902	2	
-	113 611 055	Cylinder 19 - Rear wheel brake up to Chassis No. 20 - 117 901	2	
-	211 611 057	Cylinder 22 - Front wheel brake up to Chassis No. 20 - 117 901	2	
-	211 611 069	Cylinder 25.4 - Front wheel brake, left from Chassis No. 20 - 117 902 up to 1 144 281	2	
6	211 611 069 C	Cylinder 25.4 - Front wheel brake, left from Chassis No. 1 144 282	2 2	M 216
-	211 611 070	Cylinder 25.4 - Front wheel brake, right from Chassis No. 20 - 117 902 up to 1 144 281	2	
-	211 611 070 C	Cylinder 25.4 - Front wheel brake, right from Chassis No. 1 144 282	2 2	M 216

Key No.	Part No.	Description	Quantity	Type and model
7	N 10 020 1	Bolt, hex. head M 10×38 DIN 70 613	8	
8	N 12 010 2	Lock washer B 10 DIN 127 galvanized	8	
-	111 698 183	Repair kit for brake master cylinder 19.05 (30 mm stroke) up to Chassis No. 20 - 117 901	1	
-	211 698 201	Repair kit for brake master cylinder 22.2 (30 mm stroke) from Chassis No. 20 - 117 902 up to 1 144 281	1	
9	211 698 203 A	Repair kit for brake master cylinder 22.2 (36 mm stroke) 211 611 011 J from Chassis No. 1 144 282	1	M 216
A 2	211 698 201 B	Repair kit for tandem master cylinders 22.2, 211 611 011 M/P/R (LHD)	1	211-271
-	211 698 201 C	Repair kit for tandem master cylinder 22.2, 211 611 011 Q (LHD)	1	211-271
10		no longer available, superseded by: 211 698 201		
11		no longer available, superseded by: 211 698 201		
12	113 611 185	Lock ring - Piston stop	1	
A 3	113 611 191	Check valve - Tandem master cylinder (LHD)	2	211-271
A 4	113 611 193	Gasket A 12×16 - Tandem master cylinder (LHD)	2	211-271
13	113 611 195	Boot	1	
A 5	211 611 195 B	Boot - Tandem master cylinder (LHD)	1	211-271
A 6	211 611 203 A	Return spring front - Tandem master cylinder (LHD)	1	211-271
A 7	211 611 205	Return spring rear - Tandem master cylinders 211 611 011 M/P/R (LHD)	1	211-271
-	211 611 205 A	Return spring rear - Tandem master cylinder 211 611 011 Q (LHD)	1	211-271

Key No.	Part No.	Description	Quantity	Type and model
A 8	211 611 207 A	Retaining washer - Tandem master cylinder (LHD)	2	211-271
A 9	211 611 209	Stop sleeve 12.5×27.5 - Tandem master cylinders 211 611 011 M/P/R (LHD)	1	211-271
-	211 611 209 A	Stop sleeve - Tandem master cylinder 211 611 011 Q (LHD)	1	211-271
A 10	211 611 211	Screw - Stop sleeve - Tandem master cylinder (LHD)	1	211-271
A 11	211 611 233	Stop washer - Tandem master cylinder (LHD)	1	211-271
A 12	113 611 245	Bolt, hex. head - Tandem master cylinders 211 611 011 M/P/R	1	
-	211 611 245 A	Bolt, hex. head - Tandem master cylinder 211 611 011 Q (LHD)	1	211-271
A 13	N 13 804 2	Sealing washer A 6×10	1	
14	211 611 301 C	Reservoir (transparent) up to Chassis No. 217 019 487 from Chassis No. 217 019 488 up to 217 072 465 (RHD) from Chassis No. 217 072 466 up to 217 148 459	1	211-216, 224, 228, 231-238, 244, 261-274
-	211 611 301 F	Reservoir - Tandem master cylinder (LHD)	1	M 172: 211-271
A 14	211 611 313 B	Reservoir - Tandem master cylinder (LHD) from Chassis No. 227 019 448 up to 227 072 465 (LHD) from Chassis No. 217 019 466 up to 217 148 459	1	221, 223, 225, 241, 251, 281, 285
-	211 611 337	Packing - Reservoir (LHD)	1	M 172: 211-271
-	113 955 481	Union nut - Line (LHD)	2	M 172: 211-271
15	211 611 351 B	Screw cap 45 mm dia. - Reservoir 211 611 301 B/C/E/211 611 313 B	1	
16	113 611 373	Plug - Reservoir 211 611 301 A	1	
17	211 611 381 B	Strainer - Reservoir 211 611 301 B/C/E/211 611 313 B	1	
18	N 13 827 2	Sealing washer A 22×27	1	

MAIN GROUP



ROAD WHEELS
BRAKES

Brake cylinders
Lines

Key No.	Part No.	Description	Quantity	Type and model
19	211 611 459 C	Boot - Brake cylinder 25.4	4	
20	211 611 461	Boot - Brake cylinder 22.2	4	
-	113 611 475	Bleeder screw with rubber cap - Brake cylinder 22/19	4	
21	211 611 475 A	Bleeder screw M 10 - Brake cylinder 25.4, front ..	2	
22	211 611 477 A	Bleeder screw M 6 - Brake cylinder 22.2, rear	2	
23	211 611 483	Dust cap	4	
-	211 611 505	Overflow tube, front, left	1	
		up to Chassis No. 1 144 281		
24	211 611 505 B	Overflow tube, front, left	1	M 216
		from Chassis No. 1 144 282	1	
-	211 611 506	Overflow tube, front, right	1	
		up to Chassis No. 1 144 281		
25	211 611 506 B	Overflow tube, front, right	1	M 216
		from Chassis No. 1 144 282	1	
-	113 611 605	Center piece half - Brake cylinder 19	4	
-	211 611 607	Center piece half - Brake cylinder 22	4	
-	113 611 615	Pressure spring - Center piece halves	4	
-	113 611 625	Cup - Brake cylinder 19	4	
-	211 611 627	Cup - Brake cylinder 22	4	
26	211 611 637 A	Cup - Brake cylinder 22.2	4	
27	211 611 639	Cup - Brake cylinder 25.4	4	
28	211 611 657 B	Piston - Brake cylinder 22.2	4	
29	N 12 464 3	Circlip 22	4	

MAIN GROUP



ROAD WHEELS
BRAKES

Brake cylinders
Lines

Key No.	Part No.	Description	Quantity	Type and model
30	211 611 659	Piston - Brake cylinder 25.4	4	
-	113 611 665	Piston - Brake cylinder 19	4	
-	211 611 667	Piston - Brake cylinder 22	4	
-	113 611 687	Push rod - Brake cylinders 19/22	4	
-	113 611 695 D	Boot - Brake cylinder 19	4	
-	113 611 695 E	Boot - Brake cylinder 22	4	
-	113 611 701	Hose - Front brake (length 480 mm)	2	
		up to Chassis No. 20 - 117 901		
31	211 611 701	Hose - Front brake (length 440 mm)	2	
		from Chassis No. 20 - 117 902		
32	113 611 715 A	Bracket - Brake hose	6	
-	211 611 723	Line, left - Front brake (length 830 mm)	1	
		up to Chassis No. 20 - 117 901		
33	211 611 723 A	Line, left - Front brake (LHD) (length 720 mm) ..	1	211-273
		from Chassis No. 20 - 117 902		
A 15	211 611 723 C	Line, left - Front brake (dual circuit, LHD)	1	211-271
-	214 611 723 A	Line - Front brake, left (RHD) (length 1370 mm) ..	1	214-274
		from Chassis No. 20 - 117 902		
-	211 611 724	Line, right - Front brake (length 1320 mm)	1	
		up to Chassis No. 20 - 117 901		
34	211 611 724 A	Line, right - Front brake (LHD) (length 1240 mm)	1	211-273
		from Chassis No. 20 - 117 902		
A 16	211 611 724 C	Line, right - Front brake (dual circuit), (LHD)	1	211-271
-	214 611 724 A	Line - Front brake, right (RHD) (length 710 mm) ..	1	214-274
		from Chassis No. 20 - 117 902		
A 17	211 611 725	Brake line between tandem master cylinder and T-piece front (LHD)	1	211-271
-	111 911 911	Grommet - Brake line (LHD)	1	211-271
35	113 611 731	Union nut	x	

MAIN GROUP



ROAD WHEELS BRAKES

Brake cylinders Lines

Key No.	Part No.	Description	Quantity	Type and model
-	211 611 741	Brake line from master cylinder to T-piece (length 2460 mm) (LHD) up to Chassis No. 20 - 117 901	1	211-273
-	214 611 741	Brake line from master cylinder to T-piece (length 2990 mm) (RHD) up to Chassis No. 20 - 117 901	1	214-274
A 18/36	211 611 741 B	Brake line from master cylinder to T-piece (length 2815 mm) (LHD) from Chassis No. 20 - 117 902	1	211-273
-	214 611 741 B	Brake line from master cylinder to T-piece (length 3413 mm) (RHD) from Chassis No. 20 - 117 902	1	214-274
37	211 611 751	Grommet - Brake line (rubber)	8	
38	113 611 755	T-piece - Brake lines	1	
39	N 10 218 4	Bolt, hex. head M 6x25	1	
40	N 12 226 2	Spring washer B 6	1	
-	211 611 763	Brake line between T-piece and brake hose, rear, left (length 720 mm) up to Chassis No. 20 - 117 901	1	
-	211 611 763 A	Brake line between T-piece and brake hose, rear, left (length 218 mm) from Chassis No. 20 - 117 902 up to 170 000	1	
41	211 611 763 B	Brake line between T-piece and brake hose, rear, left (length 160 mm) from Chassis No. 170 001	1	
-	211 611 764	Brake line between T-piece and brake hose, rear, right (length 1040 mm) up to Chassis No. 20 - 117 901	1	
-	211 611 764 A	Brake line between T-piece and brake hose, rear, right (length 680 mm) from Chassis No. 20 - 117 902 up to 170 000	1	
42	211 611 764 B	Brake line between T-piece and brake hose, rear, right (length 573 mm) from Chassis No. 170 001	1	

MAIN GROUP



ROAD WHEELS BRAKES

Brake cylinders Lines

327

Key No.	Part No.	Description	Quantity	Type and model
30	211 611 659	Piston - Brake cylinder 25.4	4	
-	113 611 665	Piston - Brake cylinder 19	4	
-	211 611 667	Piston - Brake cylinder 22	4	
-	113 611 687	Push rod - Brake cylinders 19/22	4	
-	113 611 695	Boot - Brake cylinder 19	4	
-	113 611 695 E	Boot - Brake cylinder 22	4	
-	113 611 701	Hose - Front brake (length 480 mm) up to Chassis No. 20 - 117 901	2	
31	211 611 701	Hose - Front brake (length 440 mm) from Chassis No. 20 - 117 902	2	
32	113 611 715 A	Bracket - Brake hose	6	
-	211 611 723	Line, left - Front brake (length 830 mm) up to Chassis No. 20 - 117 901	1	
33	211 611 723 A	Line, left - Front brake (LHD) (length 720 mm) .. from Chassis No. 20 - 117 902	1	211-273
A 15	211 611 723 C	Line, left - Front brake (dual circuit, LHD)	1	211-271
-	214 611 723 A	Line - Front brake, left (RHD) (length 1370 mm) .. from Chassis No. 20 - 117 902	1	214-274
-	211 611 724	Line, right - Front brake (length 1320 mm) up to Chassis No. 20 - 117 901	1	
34	211 611 724 A	Line, right - Front brake (LHD) (length 1240 mm) .. from Chassis No. 20 - 117 902	1	211-273
A 16	211 611 724 C	Line, right - Front brake (dual circuit), (LHD)	1	211-271
-	214 611 724 A	Line - Front brake, right (RHD) (length 710 mm) .. from Chassis No. 20 - 117 902	1	214-274
A 17	211 611 725	Brake line between tandem master cylinder and T-piece front (LHD)	1	211-271
-	111 911 911	Grommet - Brake line (LHD)	1	211-271
35	113 611 731	Union nut	x	

MAIN GROUP



ROAD WHEELS
BRAKES

Brake cylinders
Lines

Key No.	Part No.	Description	Quantity	Type and model
-	211 611 741	Brake line from master cylinder to T-piece (length 2460 mm) (LHD) up to Chassis No. 20 - 117 901	1	211-273
-	214 611 741	Brake line from master cylinder to T-piece (length 2990 mm) (RHD) up to Chassis No. 20 - 117 901	1	214-274
A 18/36	211 611 741 B	Brake line from master cylinder to T-piece (length 2815 mm) (LHD) from Chassis No. 20 - 117 902	1	211-273
-	214 611 741 B	Brake line from master cylinder to T-piece (length 3413 mm) (RHD) from Chassis No. 20 - 117 902	1	214-274
37	211 611 751	Grommet - Brake line (rubber)	8	
38	113 611 755	T-piece - Brake lines	1	
39	N 10 343 1	Bolt, hex. head BM 6x25 DIN 931	1	
40	N 12 226 2	Spring washer B 6 DIN 137 galvanized	1	
-	211 611 763	Brake line between T-piece and brake hose, rear, left (length 720 mm) up to Chassis No. 20 - 117 901	1	
-	211 611 763 A	Brake line between T-piece and brake hose, rear, left (length 218 mm) from Chassis No. 20 - 117 902 up to 170 000	1	
41	211 611 763 B	Brake line between T-piece and brake hose, rear, left (length 160 mm) from Chassis No. 170 001	1	
-	211 611 764	Brake line between T-piece and brake hose, rear, right (length 1040 mm) up to Chassis No. 20 - 117 901	1	
-	211 611 764 A	Brake line between T-piece and brake hose, rear, right (length 680 mm) from Chassis No. 20 - 117 902 up to 170 000	1	
42	211 611 764 B	Brake line between T-piece and brake hose, rear, right (length 573 mm) from Chassis No. 170 001	1	

MAIN GROUP



ROAD WHEELS
BRAKES

Brake cylinders
Lines

329

Key No.	Part No.	Description	Quantity	Type and model
43	113 611 775	Hose - Rear brake (length 270 mm)	2	
-	211 611 781	Line - Rear brake, left and right (length 610 mm) up to Chassis No. 20 - 117 901	2	
44	211 611 781 C	Line - Rear brake, left (length 555 mm)	1	
45	211 611 782 C	Line - Rear brake, right (length 555 mm)	1	
46	211 611 841	Clamp - Brake hose (rear axle)	2	
47	N 10 242 5	Bolt, hex. head M 8x25	2	
48	N 12 008 2	Lock washer B 8	2	
49	N 11 008 8	Nut, hex. M 8	2	
50/51	211 611 795 A	Brake line clip 1	x	
-	N 13 882 1	Tapping screw, hex. head BZ 4.2x16	1	
-	N 20 366 1	Connecting hose 7.3x2.25x70	2	M 172
-	211 611 805 B	Line between reservoir and master cylinder front (LHD)	1	M 172
-	211 611 806 A	Line between reservoir and master cylinder rear (LHD)	1	M 172
-	211 611 807 A	Elbow - Master cylinder (LHD)	2	M 172
A 19	211 611 817 A	Plug - Reservoir 211 611 301 E	2	
-	211 611 831	Clip for line between reservoir and master cylinder (LHD)	1	M 172
-	211 611 833	Gasket 8x1x5.5 - Line (LHD)	4	M 172
52	211 611 847	Bracket - Brake line, rear, left	1	
53	211 611 848	Bracket - Brake line, rear, right	1	

Key No.	Part No.	Description	Quantity	Type and model
---------	----------	-------------	----------	----------------

BRAKE FLUID

-	B 1	Brake cylinder paste (180 g.)	x	
-	B 2	Genuine brake fluid, 1 Liter	x	
-	B 3	Genuine brake fluid, 5 Liters	x	
-	B 5	Genuine brake fluid, 0.25 Liters	x	

Part No.	Description	Quantity
----------	-------------	----------

REPAIR KITS

211 698 071 A	1 set of brake linings 40, rear for Transporter (Jurid) from Chassis No. 20 - 117 902 up to 1 144 281 comprising: Brake lining 40, rear (standard)	4
	Rivet C 4x7.5	45
211 698 073	1 set of brake linings 40, front or rear for Transporter (Energit) up to Chassis No. 20 - 117 901 comprising: Brake lining 40 (standard)	4
	Rivet C 4x7.5	35
211 698 074	1 set of brake linings 40, front or rear for Transporter (oversize, Energit) up to Chassis No. 20 - 117 901 comprising: Brake lining 40 (oversize)	4
	Rivet C 4x7.5	35
211 698 074 A	1 set of brake linings 40, rear for Transporter (oversize, Energit) from Chassis No. 20 - 117 902 up to 1 144 281 comprising: Brake lining 40, rear (oversize)	4
	Rivet C 4x7.5	45

Part No.	Description	Quantity
211 698 093 A	1 set of brake linings 45, rear for Transporter (Energit) M 216 and from Chassis No. 1 144 282	
	comprising:	
	Brake lining 45, rear	4
	Rivet C 4×7.5	40
211 698 094 A	1 set of brake linings 45, rear for Transporter (oversize, Textar) M 216 and from Chassis No. 1 144 282	
	comprising:	
	Brake lining 45, rear (oversize)	4
	Rivet C 4×7.5	40
211 698 111	1 set of brake linings 50, front for Transporter (Jurid) from Chassis No. 20 – 117 902 up to 1 144 281	
	comprising:	
	Brake lining 50, front	4
	Rivet C 4×7.5	45
211 698 112	1 set of brake linings 50, front for Transporter (oversize, Jurid) from Chassis No. 20 – 117 902 up to 1 144 281	
	comprising:	
	Brake lining 50, front (oversize)	4
	Rivet C 4×7.5	45

Part No.	Description	Quantity
211 698 133 A	1 set of brake linings 55, front for Transporter (Energit) M 216 and from Chassis No. 1 144 282	
	comprising:	
	Brake lining 55, front	4
	Rivet C 4×7.5	40
211 698 134 A	1 set of brake linings 55, front for Transporter (oversize, Textar) M 216 and from Chassis No. 1 144 282	
	comprising:	
	Brake lining 55, front (oversize)	4
	Rivet C 4×7.5	40
111 698 183	Repair kit for brake master cylinder 19.05 (30 mm stroke) up to Chassis No. 20 – 117 901	
	comprising:	
	Check valve	1
	Piston return spring	1
	Piston	1
	Secondary cup	2
	Piston stop	1
	Lockring	1
	Boot	1
211 698 201	Repair kit for brake master cylinder 22.2 (30 mm stroke) from Chassis No. 20 – 117 902 up to 1 144 281	
	comprising:	
	Check valve	1
	Piston return spring	1
	Main cup	1
	Piston	1
	Washer	1
	Piston stop	1
	Lockring	1
	Boot	1
	Secondary cup	1

Part No.	Description	Quantity
211 698 201 B	Repair kit for tandem master cylinder 22.2, 211 611 011 M/P (LHD)	
	comprising:	
	Primary cup	4
	Secondary cup	1
	Boot	1
	Washer	2
	Primary piston	1
	Secondary piston	1
	Seal	1
	Lockring	1
	Support ring	2
211 698 201 C	Repair kit for tandem master cylinder 22.2, 211 611 011 Q/R (LHD)	
	comprising:	
	Primary cup	4
	Secondary cup	1
	Boot	1
	Washer	2
	Primary piston	1
	Secondary piston	1
	Seal	1
	Lockring	1
	Support ring	2
211 698 203 A	Repair kit for brake master cylinder 22.2 (36 mm stroke) M 216 and from Chassis No. 1 144 282	
	comprising:	
	Check valve	1
	Piston return spring	1
	Main cup	1
	Piston	1
	Washer	1
	Piston stop	1
	Lockring	1
	Boot	1
	Secondary cup	1

Part No.	Description	Quantity
113 698 273	Repair kit for 1 wheel brake cylinder 19 up to Chassis No. 20 - 117 901	
	comprising:	
211 611 483	Rubber cap	1
113 611 615	Pressure spring - Cup expander	1
113 611 625	Cup	2
113 611 695	Boot	2
211 698 291	Repair kit for 1 wheel brake cylinder 22.2 from Chassis No. 20 - 117 902	
	comprising:	
211 611 483	Rubber cap	1
211 611 637 A	Cup	2
211 611 461	Boot	2
113 698 293	Repair kit for 1 wheel brake cylinder 22 up to Chassis No. 20 - 117 901	
	comprising:	
211 611 483	Rubber cap	1
113 611 615	Pressure spring - Cup expander	1
211 611 627	Cup	2
113 611 695 E	Boot	2
211 698 411	Repair kit for 1 wheel brake cylinder 25.4 from Chassis No. 20 - 117 902	
	comprising:	
211 611 639	Cup	1
211 611 459 C	Boot	1